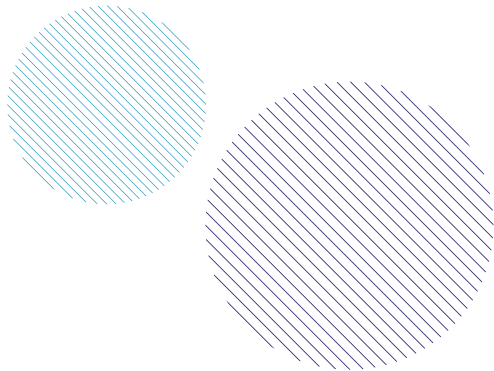




FOČA

Your new investment destination



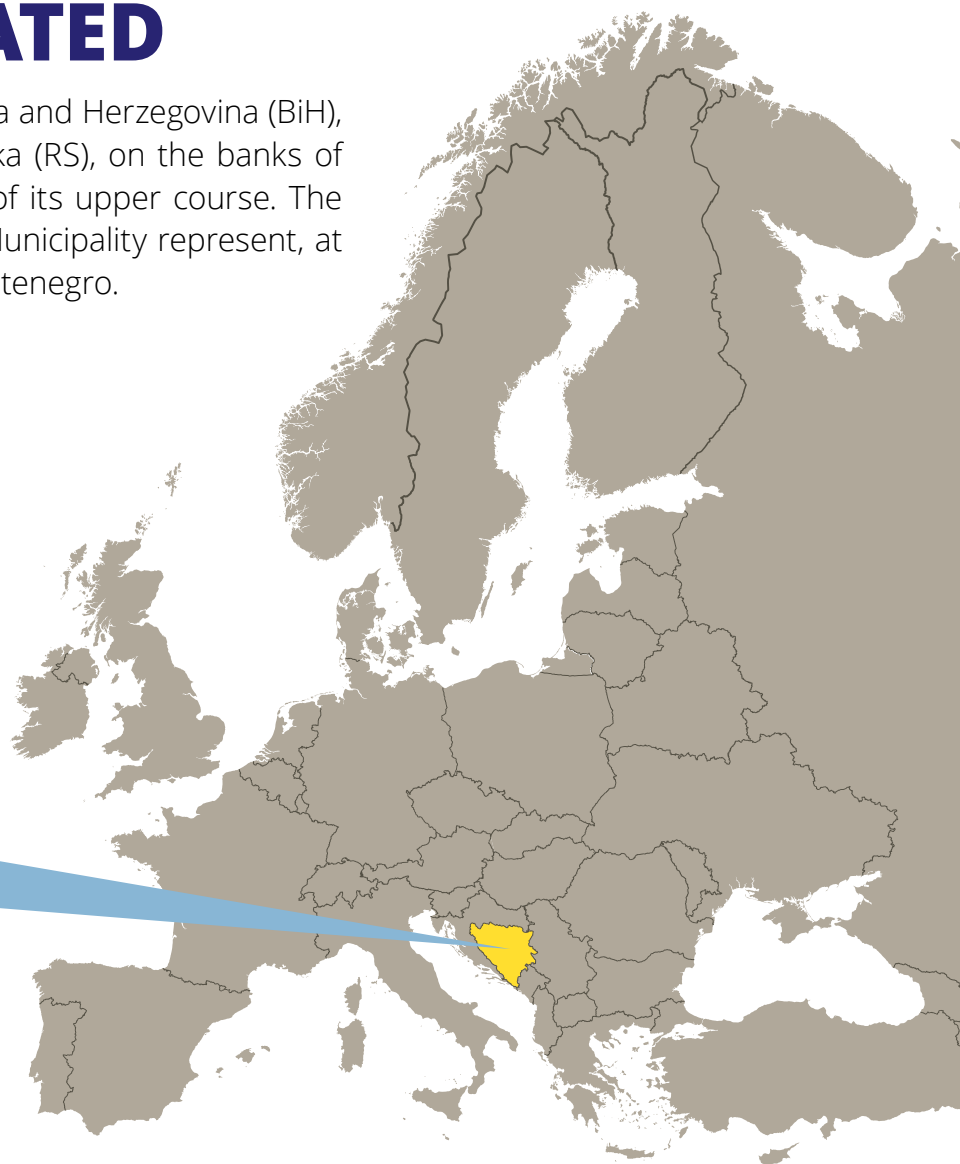
www.opstinafoca.rs.ba





WE ARE LOCATED

...in the south-eastern part of Bosnia and Herzegovina (BiH), within the entity of Republika Srpska (RS), on the banks of river Drina, on the very beginning of its upper course. The east and the south border of the Municipality represent, at the same time, the border with Montenegro.



FOČA IS

the second largest municipality in Republika Srpska. In 2018, the Financial Times's fDi Magazine ranked Republika Srpska in the category of the top 10 small regions of the future for 2018/2109, for the strategy for attracting foreign direct investment.

Surface area	1,115 km ² 4.52% of territory of Republika Srpska 2.18% of total territory of Bosnia and Herzegovina
Population	18,288 <i>According to the 2013 Population Census</i>
Relief	Foča is located between 400 meters above sea level (canyon plains, river valleys and fields) and 2,386 meters above sea level (mountain peaks and plateaus)
Climate	Mostly mountain climate, in the valley of River Drina moderate continental climate
Time zone	GMT+1



FOČA

- Your new investment destination

Reasons to select Foča as an investment destination are numerous.

- Foča is extremely rich in high quality forests that occupy 69% of its surface area, of which 90% is in state ownership. Unlike other municipalities in BiH, in the Municipality of Foča the surfaces under forests are organized in relatively large parcels. Forest wealth represents a huge opportunity for value-added processing in the wood processing sector.
- 12.68% of the total surface area of Foča under meadows and 9% under pasturelands provide large potentials for livestock keeping. Foča is one of the leading municipalities in Republika Srpska and Bosnia and Herzegovina in the number of plum, pear, apple and walnut trees. Unused potentials open up opportunities for investing in cultivation and processing of meat, fruit, and vegetables.
- Natural wealth in the Sutjeska National Park with Perućica, the only remaining primordial forest in Europe, and the canyon of River Tara, between 800 and 1,300 meters deep, the deepest canyon on Earth after the Grand Canyon in Colorado, rivers, mountain lakes, high mountains, diverse game and endemic species of flora and fauna, attract numerous tourists and open up opportunities for investing in tourist infrastructure.
- Hydro power potentials in Foča, with 17 water courses, are the richest in BiH. River Drina basin represents the most significant unused hydro potential in the Balkans, which can be used in large and medium hydro power plants. Construction of small hydro power plants is planned on other rivers.

Municipality of Foča places special focus on ecology and preservation of the environment.



TRANSPORT INFRASTRUCTURE

Favorable costs of transport of goods are facilitated by transport infrastructure that connects Foča by primary roads with Sarajevo, Višegrad and Goražde, the Croatian and Montenegrin seaside, and with Serbia.

River Drina flows through the Municipality, as the main traffic artery in the territory of eastern Bosnia.

Roads	Municipality of Foča is connected with other parts of BiH by primary roads: Primary road M20 (Goražde-Foča-Gacko-Trebinje-Ivanica-border with Croatia/EU stretches from North to South and connects Foča with southern BiH and with Croatia/EU. Primary road M18 (Bijeljina-Ugljevik-Tuzla-Sarajevo-Foča) connects Foča with Serbia through the border crossing in Rača and with Montenegro through the border crossing in Hum. Primary road M18 is a part of the European international road E762.
Border crossings	With Montenegro: <ul style="list-style-type: none"> • Hum - International border crossing of category I in road transport With Serbia: <ul style="list-style-type: none"> • Vardište - International border crossing of category I in road transport With Croatia/EU: <ul style="list-style-type: none"> • Šamac - International border crossing of category I in road transport
International airports	BiH: Sarajevo (cargo) - 72 km / 1h15 Montenegro: Podgorica (cargo) - 163 km / 3h00 Serbia: Belgrade (cargo) - 344 km / 5h00 Croatia/EU: Dubrovnik (cargo) - 170 km / 2h30
International ports	BiH: Brčko (river port) - 256 km / 5h00 Croatia/EU: Ploče (sea port) - 197 km / 3h30
Distance from key markets*	BiH: Banja Luka - 267 km / 4h30; Sarajevo 81 km / 1h30 Montenegro: Podgorica - 163 km / 3h20 Serbia: Belgrade - 344 km / 5h00 Croatia: Zagreb - 478 km / 6h40 Slovenia: Ljubljana - 615 km / 8h00 Macedonia: Skopje 435 km / 8h30 Italy: Rome - 1,373 km / 15h40 (by land) Austria: Vienna - 847 km / 10h07 Germany: Berlin - 1,422 km / 17h25

Source: Decision on Determination of Border Crossings in Bosnia and Herzegovina ("Official Gazette of BiH", issue No. 39 dated May 22, 2012); <http://www.viamichelin.com/>

* Not including the time necessary for border inspection control.

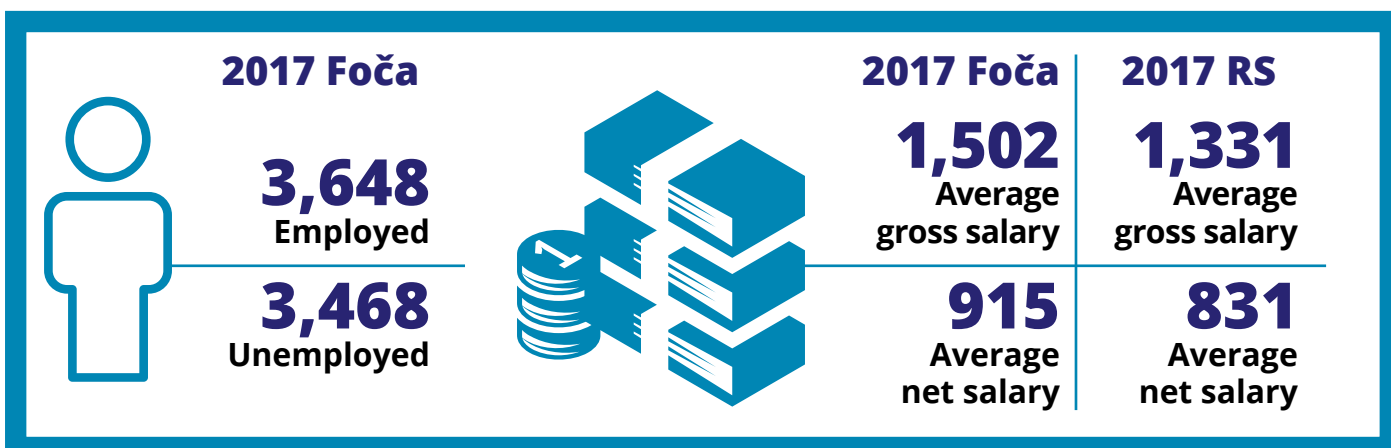


BUSINESS ENVIRONMENT

Registered business entities	90 companies (with 3,648 employees) 700 agricultural farms 317 entrepreneurial stores (with 552 employees)
Main branches of industry with % share in the economy	1. Processing industry is sector with the most significant share in the economy of Foča in which, in 2017, most enterprises were operating - 23 enterprises, of which 17 enterprises (74 %) in wood processing. 2. Agriculture, forestry and fishing - 12 enterprises, of which 10 enterprises (83%) in the forestry and wood cutting. 3. Trade - 15 enterprises of which 7 enterprises (47%) operate in the wholesale trade and 7 enterprises (47%) in the retail trade.
Foreign trade exchange in the Municipality in 2016	BAM 16.75 million – Total scope of foreign trade exchange BAM 13.56 million – Exports BAM 3.19 million – Imports BAM 10.37 million – Foreign trade surplus 424% – Coverage of imports with exports

HUMAN RESOURCES

- Available qualified labor force



Source: Municipality of Foča, 2018 – Employed and Unemployed Persons

Republika Srpska – Republic Statistical Institute: Bulletin – Salaries, Employment and Unemployment, 2018 – Average Gross and Net Salaries

In Foča, labor force profiles are educated in the high school center and in two university schools.

High School Center "Foča" www.scfoca.com	<ul style="list-style-type: none"> • grammar school • forestry and wood processing • mechanical engineering and metal processing • health
University Center in Foča (part of the University in East Sarajevo) http://www.ues.rs.ba/la/o-univerzitetu-2/univerzitetski-centri/univerzitetski-centar-foca/	University School of Medicine: <ul style="list-style-type: none"> • medicine • dentistry • health care • special education and rehabilitation Orthodox religious university school "Sveti Vasilij Ostroški"

NATURAL WEALTH

- Forest wealth
- Hydro power potential
- Dark coal mine in Miljevina, stocks of 300 million tons, with surface and underground mining
- Mineral raw materials (copper, lead and zinc) in the locality of Čelebići
- Natural reserves (rarities, parks, endemic species)

COMPETITIVE SECTORS FOR INVESTING

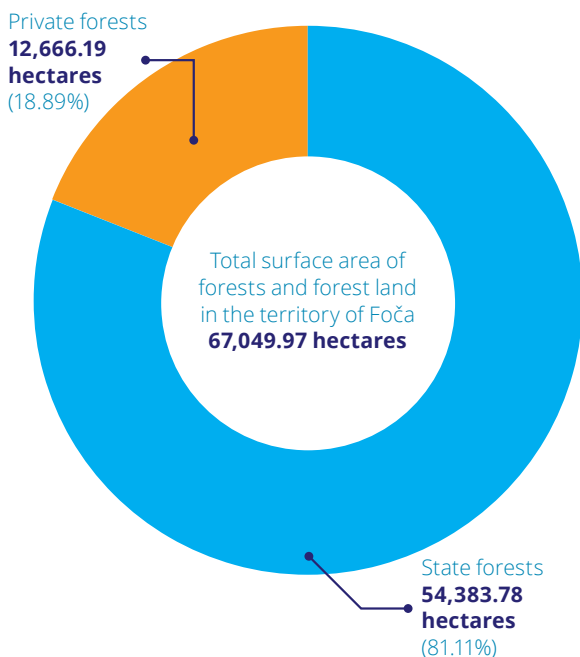
FORESTRY AND WOOD PROCESSING

– Abundance of resources, quality of wood, and tradition in the sector

Foča possesses excellent opportunities for investing in wood processing. More than 69% of territory of Foča is under forests. Extraordinary wealth of forests and high-quality wood mass, along with favorable labor force costs, facilitate investments in all the phases of wood processing, and primarily in final manufacturing. Tradition in forestry and wood processing in this region provides a solid foundation for application of new modern technologies.

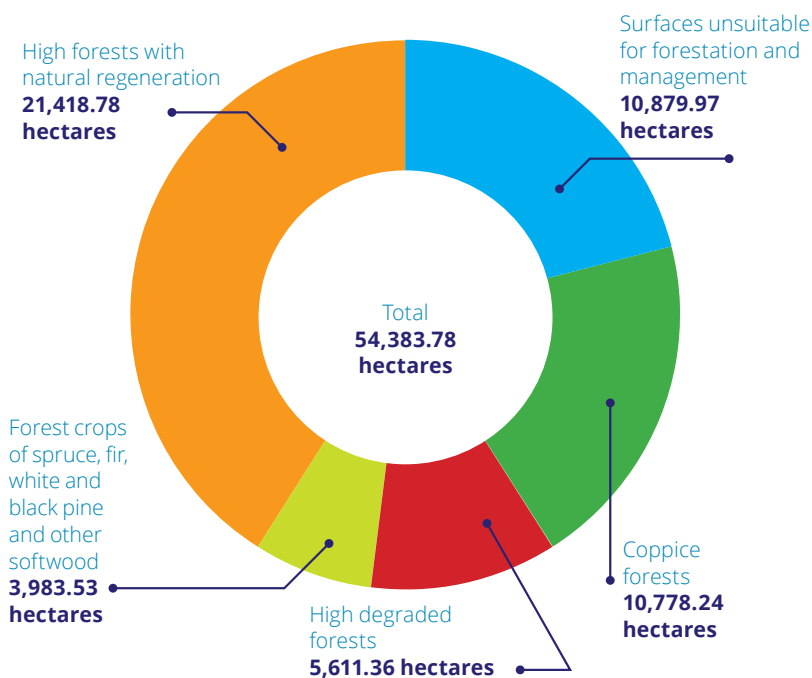
In 2016, the cut gross wood mass amounted to 169,963 m³ which represents around 6% of total gross wood mass in RS.

Structure of forests in the Municipality of Foča by ownership



Source: 2017-2026 Municipality of Foča Development Strategy.

Type of forests and forest land in the Municipality of Foča (in state ownership)



Source: 2015-2020 Municipality of Foča and Plužine Integrated Rural Development Strategy

Business opportunities:

- **Modernization of the wood production process**
- **Production capacities for value added processing and finalization of wood products**



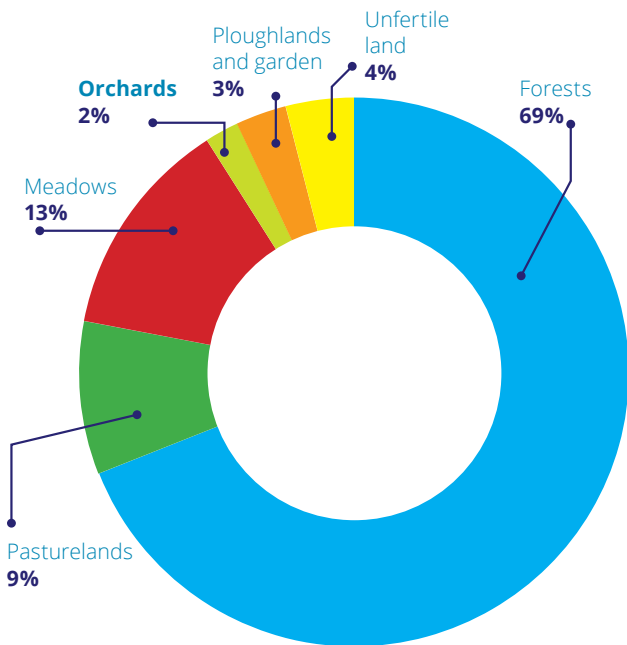
Hunting

Foča is the location of the hunting grounds “Bakić” with total surface area of 132,124 hectares. The most frequently hunted game includes boars (67%) and deer (30%), as well as mountain goats, bears, and wolves. In the 2015/16 hunting season, the total of 475 hunting licenses were issued to hunters of the local Hunting Association, in addition to the 35 licenses issued to foreign hunters.

AGRICULTURE

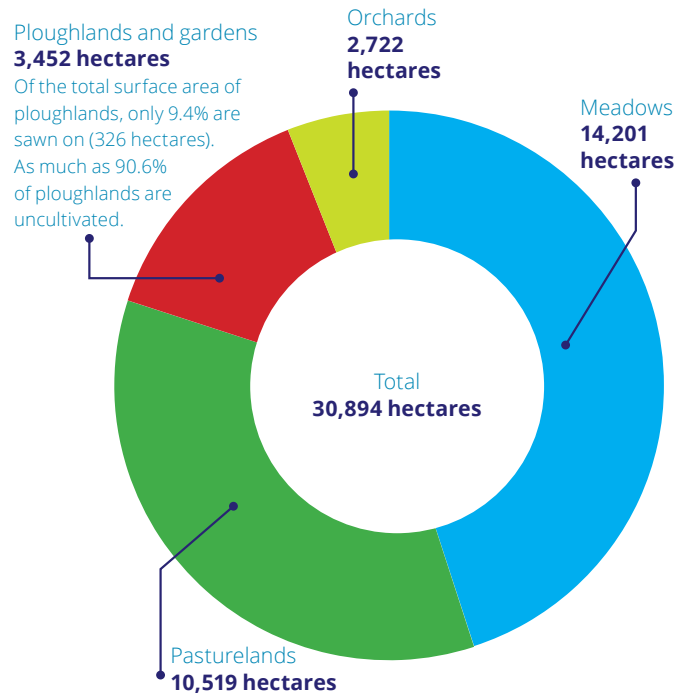
– healthy living environment and arable land for producing healthy food

Structure of land in the Municipality of Foča



Source: 2017-2026 Municipality of Foča Development Strategy.

Agricultural area in Foča by use



Source: 2017-2026 Municipality of Foča Development Strategy; 2015-2020 Municipality of Foča and Plužine Integrated Rural Development Strategy



Fruit and vegetables

The location of the broader region of Foča, which includes municipalities in the immediate circle of 75 km opens opportunities for providing investors with additional quantities at competitive prices.

Municipality of Foča provides large opportunities for the production of fruit and vegetables.

- Production of pears with possibility of aggregation of produced quantities with the neighboring municipalities of Rudo, Ustikolina-Foča, Čajniče, Ustiprača-Novo Goražde, Goražde and Pale-Prača.
- Production of apples with possibility of aggregation of produced quantities with the neighboring municipalities of Rudo, Ustikolina-Foča, Čajniče, Ustiprača-Novo Goražde, Goražde and Kalinovik.
- Production of plums with possibility of aggregation of produced quantities with the neighboring municipalities of Čajniče, Kalinovik, Ustiprača- Novo Goražde, Goražde and Ustikolina-Foča.
- Possibility of aggregation of produced quantities of raspberries with the neighboring municipalities of Pale, Ustiprača-Novo Goražde, Goražde, Ilidža, Sokolac and Ustikolina-Foča.

Business opportunities

- Processing capacities for fruit and vegetables
- Cold storage and cooling capacities for fruit and vegetables and/or expansion of existing capacities
- Cold storage with deep freeze
- Construction of a distribution center
- Cultivation and purchase of fruit and vegetables

Source: World Bank Group: Fruit and Vegetables Sector in Bosnia and Herzegovina Investment Profile, 2018

Livestock keeping

Insufficiently utilized surfaces of 14,201 hectares under meadows (12.68% of the total surface area of the municipality) and 10,519 hectares of pasturelands (9% of total surface area) provide great potentials for livestock keeping. Around 1,700 heads of large livestock are being kept, in addition to 12,000 sheep, 3,000 pigs, 500 goats, 500 horses, 20,000 heads of poultry. Sheep keeping is almost exclusively focused on raising lambs.

Business opportunities:

- Construction of small plants for meat processing

Beekeeping

Foča has ideal conditions for the production of meadow honey and medljika – forest honey. Thanks to the wealth of untouched nature, the honey is of supreme quality. There are close to 400 beekeepers in Foča. It is estimated that beekeepers possess around 2,500 bee societies.

Business opportunities

- Beekeeping tourism
- Construction of a small honey filling plant

Purchasing and processing forest and medicinal plants and mushrooms

In Foča, this activity is performed by 2 companies.

Business opportunities

- Investing in processing capacities



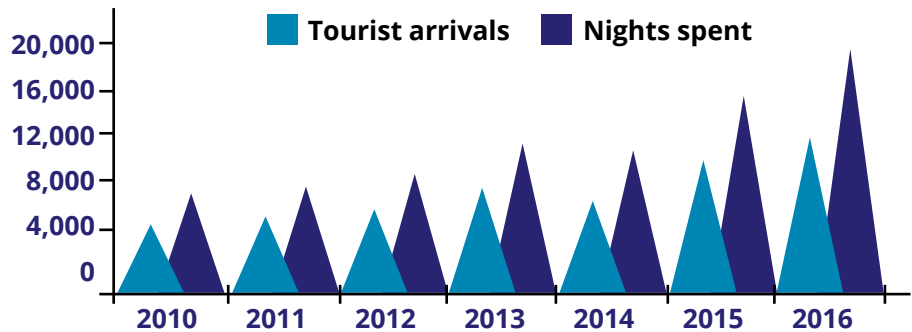
TOURISM

– Untouched beauty in the heart of Europe

Extraordinary beauty and diversity of the landscape – from mild valleys, dense forests, clear rivers, mountain pasturelands, to high mountain peaks, traditional food and cultural and historical monuments, result in Foča being an extremely attractive tourist destination.

Growth is recorded each year in the number of tourists that enjoy various types of tourism: sport and recreational, adventure, mountain, hunting, fishing, eco-tourism, rural, transit, cultural and event, scientific and research and outings tourism.

Tourist arrivals



Source: Republika Srpska – Republic Institute of Statistics: Cities and Municipalities of Republika Srpska 2017.

The strictly protected natural reserve of Perućica (1,434 ha) is one of the rare protected primordial forests in Europe. Together with parts of mountains of Maglić (2,836 m – the highest peak in BiH), Volujak, Vučevo and Zelengora, it comprises the Sutjeska National Park. In 2000, Sutjeska National Park was included in Category II of the UN Department for Protection of Nature and Natural Wealth (IUCN).

The canyon of River Tara, as a unique phenomenon, by its depth of 1,000 meters, and in places even 1,300 meters, it is deepest in Europe, and second deepest on the planet, right after the Grand Canyon of Colorado River in the USA. River Tara is categorized in the III and IV degree in the international river categorization scale, however, in April and May, when the water levels are the highest, its rapids reach value V, and sometimes even degree VI of difficulty. Since 1977 River Tara has been under protection of UNESCO within the framework of the “Man and Biosphere” programme and entered into the Global Biosphere Ecological Reserve.

Source: International Rafting Federation (IRF) <http://www.internationalrafting.com/recreation-2/river-database/tara-drina-rivers-bosnia-herzegovina/>



Business opportunities:

- **Improvement and construction of accommodation capacities, catering and service facilities**
- **Biodiversity of the area with precious and abundant stock of game and rare plant species, of which many are endemic, provides options for development of educational, scientific, tourist and recreational and servicing business activities**

Natural wealth	Cultural and historical monuments Traditional events
<p>Sutjeska National Park with extraordinary preserved natural wealth:</p> <ul style="list-style-type: none">• Skakavac waterfall in the heart of primordial forest, more than 70 m tall• Eight glacial lakes “mountain eyes” on mountain Zelengora• Deep canyons of rivers Sutjeska, Hrčavka and Jabučnica, clear mountain rivers rich with trout fish• Special hunting grounds “Zelengora” with surface area of 53,240 hectares• Rich stock of game and rare plant species, of which many are endemic• http://npsutjeska.info/sr/home-1/	<p>9 cultural monuments protected by the state and 13 culturally attractive locations</p>
<p>Diversity of fauna in the rivers of Drina, Čehotina, Sutjeska and Bistrica. The course of river Čehotina as a whole represents natural wealth and a reserve.</p>	<p>Necropolis with stećak type monuments with 211 individual monuments in the locality of Mramor (Crkvina) in Vrbica near Foča was included in the UNESCO Global Heritage List, among other localities in BiH.</p>
<p>In Dančići village, in the settlement of Pirni Do near Foča, there is the unique natural phenomenon – sand pyramids - on the ninth kilometer of the old road Foča - Miljevina - Sarajevo.</p>	<p>Cultural events</p> <ul style="list-style-type: none">• January celebrations• May days of spirituality, culture, and sports• OK Fest in Tjentište
<p>Ledenjača Cave – natural monument in Miljevina, in the vicinity of Pješčane piramide (Sand pyramids). The cave has pre-historical drawings in front of the entrance that are, by their beauty, attractiveness and originality, unique in RS and BiH, and it is estimated that they originate from the Bronze Age.</p>	<p>Sports events</p> <ul style="list-style-type: none">• Football friends• Vidovdan climb on Maglič mountain• Action for Zelengora mountain lakes• Auto-moto rally Sutjeska• Memorial football tournament “Ratko Rade Šobot”



ENERGY

– Enormous unused hydro potential

Within the territory of Foča there are 17 water courses. River Drina is the largest hydro potential for using water for energy generation in the Balkans, which is, for the most part, unused.

Business opportunities – construction is planned:

- **Several mini hydro power plants in the basins of rivers Sutjeska (Sutjeska 2a and 2b and Hrčavka 1,2,3) and Čehotina (in the localities of Luke, Falovići and Godijeno)**
- **Four large power plants within the system of Upper Drina on rivers Drina and Sutjeska**

Upon analyzing the possibilities for using the hydro energy potential of the basin of river Drina that belongs to Republika Srpska, it was concluded that the unused technical potential, which could be used on hydro power plants with capacity exceeding 10 MW, amount to 3,626.2 MW. The use of hydro power potential of "Upper Drina" and Sutjeska in the territory of Republika Srpska was envisaged by the construction of the Hydro Power System of Upper Drina (HES Gornja Drina). HES Gornja Drina implies the construction of four dams and hydro power plants on the profiles of "Buk Bijela", "Foča" and "Paunci" on river Drina and "Jelovački Krš" on river Sutjeska.

*Source: Power Company of Republika Srpska,
<http://ers.ba/ers/investicije-i-razvoj/hidroenergetski-potencijal/sliv-drine/>*

Several small hydro power plants (MHE) were built in Foča Municipality: MHE „Jeleč“ power up to 5 MW and MHE „Oteša 2“ power up to 1 MW. Several MHEs are in the construction phase. The construction of the MHEs on the rivers of Krupica, Oteša, Govza, Cehotina, Bjelava and Kovina is planned. Several mini hydro power plants have been built; a further construction of mini hydro power plants is planned.



FAVORABLE COSTS OF DOING BUSINESS

17% value added tax and 10% profit income tax are amongst the lowest in the region and in Europe.

In 2018, the Financial Times's fDi Magazine ranked Bosnia and Herzegovina in the 3rd place based on cost-effectiveness in the category of the top 10 medium regions of the future in Europe for 2018/2019.

Documentation for investors within competence of Foča Municipality

• Time and costs of issuance of location requirements, construction permit and usage permit

Applications for issuance of permits are submitted to the Department for Physical Space Regulation, Housing and Utility Affairs of Foča Municipality.

Contact person: Mensud Jahić, Head of Department

Telephone: +387 (0)58 210 845

E-mail: prostornouredjenjefoca@gmail.com

No.	Type of permit	Deadline for issuance	Costs
1.	Location requirements	10 days (3 days for review whether the application is complete)	<ul style="list-style-type: none"> • Administrative fee for issuance of location requirements - BAM 25 • Compensation for issuance of location requirements - BAM 100 (if UT conditions is performed by the municipal department), BAM 80 (if UT conditions is performed by an authorized person) • Lump sum rent (only for facilities that do not require a construction permit and for which the procedure ends with location requirements, Article 74 of the Law) - Zone I - 6%, Zone II - 5%, Zone III - 4%, Zone IV - 3% of the price of 1 m² of residential and commercial space within the territory of Foča Municipality • Compensation for regulation of city construction land (only for facilities that do not require a construction permit and for which the procedure ends with location requirements, Article 74 of the Law) – Zone I: 17.27 BAM/ m², Zone II: 11.33 BAM/m², Zone III: 9.16 BAM/m², Zone IV: 4.58 BAM/m²
2.	Construction permit	10 days (3 days for review whether the application is complete)	<ul style="list-style-type: none"> • Republic compensation for financing costs of surveying and establishment of real estate cadastre – 0.3% of an estimated amount for construction work • Administrative fee for issuance of construction permit - BAM 25 • Lump sum rent – Zone I - 6%, Zone II - 5%, Zone III - 4%, Zone IV - 3% of the price of 1 m² of residential and commercial space within the territory of Foča Municipality • Compensation for regulation of city construction land – Zone I: 17.27 BAM/ m², Zone II: 11.33 BAM/m², Zone III: 9.16 BAM/m², Zone IV: 4.58 BAM/m²
3.	Technical inspection of facility and issuance of usage permit	Technical inspection is performed within the legislated deadline of 15 days. After performing technical inspection, the commission adopts minutes within the legislated deadline of 8 days. Afterwards an officer issues the usage permit within the deadline of 5 days from the date of receiving complete minutes (2 days for review whether the application is complete).	<ul style="list-style-type: none"> • Administrative fee for issuance of usage permit - BAM 40 • Compensation for technical inspection to the administrative authority <ol style="list-style-type: none"> 1. For commercial facilities up to 40 m² - BAM 115; from 40-100 m² - BAM 175; exceeding 100 m² - BAM 215 2. For other facilities (utility infrastructure etc.) in flat rate depending on facility • Compensation for work of the Commission for technical inspection depending on the type and size of the facility (fees are prescribed by the Conclusion on determination of fees for the Commission for technical inspection of facilities in Foča Municipality).



• Time and costs of issuance of agricultural approval for changing use of agricultural land

Competent department: Department for Economy and Social Affairs

Contact person: Branka Salamadija, Head of Department

Telephone: +387 (0)58 210 914

E-mail: privreda@opstinafoca.rs.ba

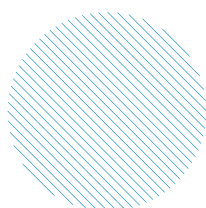
No.	Type of permit	Deadline for issuance	Price
1.	Agricultural approval for changing use of agricultural land	5 days (2 days for review whether the application is complete)	<ul style="list-style-type: none"> • Compensation for converting agricultural into non-agricultural land. The price is defined under the Decision on determination of cadastral revenue from land, "Official Gazette of Republika Srpska" issue No. 28/13, and depends on the type and class of land. The prices below are expressed in BAM per hectare. Compensation is calculated based on those prices in the manner prescribed under the Law on agricultural land of RS. <ul style="list-style-type: none"> • Ploughland: Class I - 70.02; Class II - 62.07; Class III - 48.63; Class IV - 32.36; Class V - 29.14; Class VI - 21.00; Class VII - 13.44; Class VIII - 8.89; • Orchards: Class I - 87.10; Class II - 73.34; Class III - 61.47; Class IV - 48.03; Class V - 33.84; Class VI - 23.64; • Meadows: Class I - 66.24; Class II - 52.63; Class III - 42.85; Class IV - 32.02; Class V - 26.75; Class VI - 18.24; Class VII - 13.66; Class VIII - 11.08; • Pasturelands: Class I - 8.77; Class II - 6.18; Class III - 3.98; Class IV - 3.44; Class V - 3.09; Class VI - 2.64; • Forests: Class I - 69.44; Class II - 55.64; Class III - 41.10; Class IV - 32.95; Class V - 18.33; Class VI - 16.60; Class VII - 10.19; Class VIII - 7.50. • Administrative fee for application – BAM 1

Prices of utilities for business entities

Water	1.60 KM/m ³
Sewage	0.60 KM/m ³
Waste collection	1.00 KM/m ² with VAT
Electricity	0.22 KM/kWh companies 0.50 KM/kWh production facilities
Telecommunication services - provided by 3 operators. Various packages of services are available that an investor can agree on directly with a selected operator.	
Land line, mobile phone and broadband internet	Detailed information available on link: https://mtel.ba/Poslovnji/Mobilna/m-biz/Tarife

Prices are not inclusive of 17% VAT, except for waste collection.

Source: Municipality of Foča, 2018



SUPPORT TO INVESTORS

– Municipal administration is continuously improving the conditions of doing business for the private sector

- Regulatory reform was implemented to simplify business-related administrative procedures, including approvals, permits and licenses, which resulted in faster processing, lower costs, and significant savings for the private sector.
- With the objective to increase transparency and improve access to information, the online E-register of permits and licenses within competence of Foča Municipality and electronic register of incentives were established.
- Incentives are awarded for employment in production sectors and for agriculture.
- Subsidies are awarded for agricultural production and buyout of agricultural produce.
- A continuous support to existing investors is provided through the aftercare program, in cooperation with the Ministry of Economic Relations and Regional Cooperation of RS and other municipalities in Republika Srpska, within the Collaborative Network.
- Through investment facilitation, information and assistance are provided to potential investors for an informed decisions on investing in Foča.
- Continuous investments in physical infrastructure are being made, to improve logistic conditions for investors. In 2017, the route was made for a future road from Šćepan Polje, border with Montenegro, along the right bank of River Tara, in the length of 18 kilometers, that will serve for rafting tourism.

INFORMATION OF INTEREST FOR INVESTORS

• BUSINESS REGISTRATION

- Registration of business entities is within competence of the Commercial Court in Trebinje. Detailed information on the process of business entities registration are available on the link: www.preduzetnickiportalsrpske.net/registracija/privredno-drustvo/
Intermediary in the registration is the Agency for Intermediation, IT and Financial Services – APIF, link: www.apif.net
- Registration of independent entrepreneurs is within competence of the Department for Economy and Social Affairs in Foča Municipality. The municipality issues a decision on registration within 5 days from the date of receiving complete application.

• BUSINESS SERVICES

- Available to investors are: four banks, two notary offices, five law firms, and four agencies providing accounting services.
- **Electronic registers** with detailed review of permits and licenses necessary for investors in Republika Srpska and Bosnia and Herzegovina are available on the following links:



Municipality of Foča

<http://eregistar.opstinafoca.rs.ba/>

Republika Srpska Government

<http://www.regodobrenja.net/index.php?jezik=1>

Ministry of Foreign Trade and Economic Relations of BiH

<http://rap.mvteo.gov.ba/egfVwOdlukajedinice.aspx>

- **Lists of fiscal and non-fiscal investment incentives** at all levels of government in BiH are available on the following links:

Municipality of Foča

<http://www.opstinafoca.rs.ba/листа-подстицаја-фоча-упутство-и-прав/?script=cir>

Republika Srpska Government/ Invest Srpska

<http://www.investsrpska.net/index.aspx?PageID=436&menuID=215&langid=3>

Ministry of Foreign Trade and Economic Relations of BiH

http://www.mvteo.gov.ba/izvjestaji_publikacije/izvjestaji/default.aspx?id=6176&langTag=bs-BA

Foreign Investment Promotion Agency of BiH (FIPA)

http://www.fipa.gov.ba/informacije/povlastice/strani_investitori/default.aspx?id=141&langTag=bs-BA

OTHER INFORMATION OF INVESTORS' INTEREST

List of institutions and organizations that may be useful in the process of preparation and realization of investment and during the business process:

- **Republika Srpska Government / Invest Srpska**
<http://www.investsrpska.net/>
- **Foreign Investment Promotion Agency of BiH (FIPA)**
<http://www.fipa.gov.ba/>
- **Foreign Trade Chamber of BiH**
<http://komorabih.ba/>
- **Republika Srpska Chamber of Commerce**
<https://komorars.ba/>
- **Republika Srpska Chamber of Commerce/ Regional Chamber of Commerce in Trebinje**
<http://tb.komorars.ba/>
- **Republika Srpska Employment Institute**
<http://www.zzrs.org/>



INVESTMENT LOCATIONS



Industrial and commercial zone LIVADE – Brownfield

No.	Type of information	Information
1.	Name of the zone	LIVADE
2.	Type of investment	brownfield
3.	Surface area	35,873 m ² (3,190 m ² facilities floor surface)
4.	Ownership	Municipality of Foča
5.	Description of the location in relation to the transport corridors	The zone is 1 km away from the center of the town
6.	Number and surface area of the parcels that are unoccupied and available for investing	4 parcels that can be subdivided into several parts
7.	Business opportunity: purchase of land, lease of land in the zone	Lease
8.	Price of lease of the land in the zone	No price for lease is determined in advance – it is to be determined in agreement with investors depending on the number of jobs created.
9.	Infrastructural equipment	Partially developed infrastructure
10.	Priority sectors for investing in the zone	Ecologically acceptable activities
11.	Procedure and conditions for entering into the zone	Lease contract
12.	Existing economic entities in the zone	Sezona doo
13.	Documentation necessary for investing in the zone	Documentation required for investing in the zone is issued by the Municipality of Foča.
14.	Contact	<p>Municipality of Foča Office of the Mayor Telephone: +387(0)58 210 134, e-mail: nacelnik@opstinafoca.rs.ba or Department for Economy and Social Affairs Telephone: +387(0)58 213 450, e-mail: privreda@opstinafoca.rs.ba</p>





Other industrial zones

- **Industrial zone Brod na Drini** - total of 34 hectares of developed zone (brownfield) divided into more 12 parcels with complete infrastructure for wood processing which is in private ownership (in ex-Yugoslavia, wood processing holding company Maglić with 6,000 employees) on the road from Foča to Sarajevo, 3 km from the center of the town.
- **Industrial zone in Bajevo polje** – in private ownership, 4 km from the center on the road to Sarajevo.

Contact: Office of the Mayor

Telephone: +387(0)58 210 134

E-mail: nacelnik@opstinafoca.rs.ba

SIGNIFICANT COMPANIES IN FOČA

Wood processing	Mira Mar Prodanović Flo Wood Đomiks Rudeža Porat Standard Energy Pelet Rudeža	– Manufacturing of furniture, wood processing, assembly – Manufacturing of construction materials and pellets – Manufacturing of boards, construction materials and pellets – Manufacturing of construction materials and pellets – Manufacturing of firewood – Manufacturing of construction materials – Manufacturing of construction materials – Manufacturing of pellets – Manufacturing of firewood
Agriculture and food processing sector	Boletus RS Sezona	– Purchasing of medicinal plants and forest fruits, manufacturing of jams – Purchasing and processing fruit, vegetables, mushrooms, forest fruit and medicinal plants
Energy sector	Siming trade MHE „Jeleč“ MHE „Oteša 2“	– Construction and repair of hydro power plants and power supply network
Construction	Tehnogradnja Konstruktor	– Construction of infrastructure (roads and facilities) – Construction of infrastructure (roads and facilities)
Trade	Orfej Malović	– Retail chain – Retail chain
Multi-sectoral	Pavgord	– Wood processing, construction of residential blocks, hotel business, catering, transport
Tourism	20 rafting clubs, camping grounds	





CONTACTS FOR SUPPORT TO INVESTORS

In the Municipality of Foča the Mayor with associates will be at your disposal in any of the phases of your company's investment and operating process.

Municipality of Foča

Kralja Petra I bb

Telephone: +387(0)58 210 134

+387(0)58 210 202

Fax: +387(0)58 210 097

e-mail: nacelnik@opstinafoca.rs.ba

web: www.opstinafoca.rs.ba

Department for Economy and Social Affairs

Contacts:

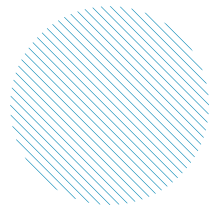
Branka Salamadija, Head of Department

Tel: +387(0)58 210 914

Igor Ćurčić, Coordinator for Collaborative network for aftercare

Tel: +387(0)58 213 450

E-mail: privreda@opstinafoca.rs.ba



WORLD BANK GROUP

IFC International
Finance Corporation



British Embassy
Sarajevo



UKaid
from the British people

The investment profile was developed as part of the Local Investment-friendly Environment (LIFE), which is being implemented by the World Bank Group in partnership with the UK Government, the Council of Ministers of Bosnia and Herzegovina, the Federation of BiH Government, and the Republika Srpska Government. The project has been funded by UK aid from the UK government; however, the views expressed do not necessarily reflect the UK government's official policies. The findings, interpretations, views and conclusions expressed herein do not reflect the views of the Executive Directors of the World Bank Group or the governments they represent.